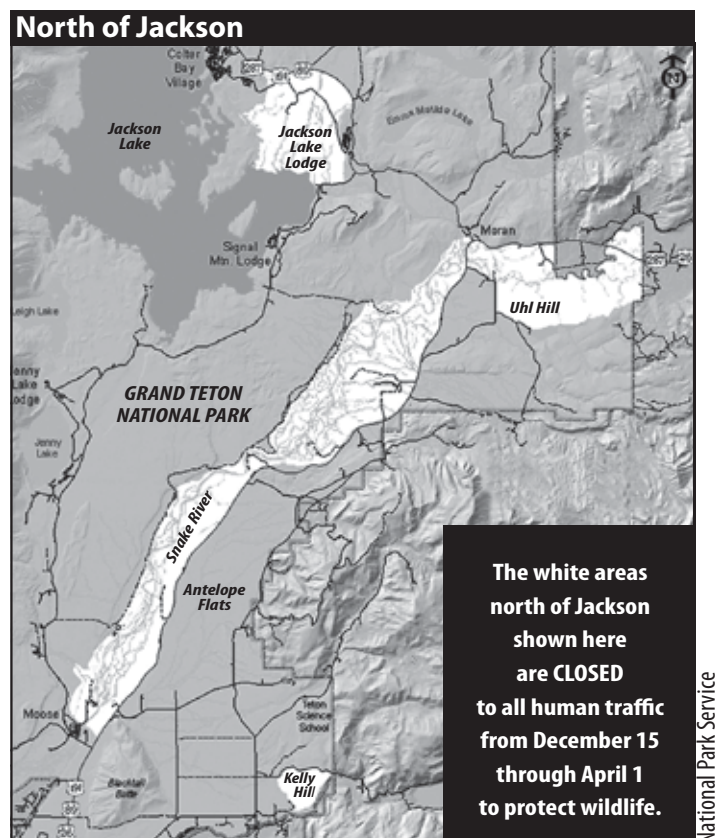
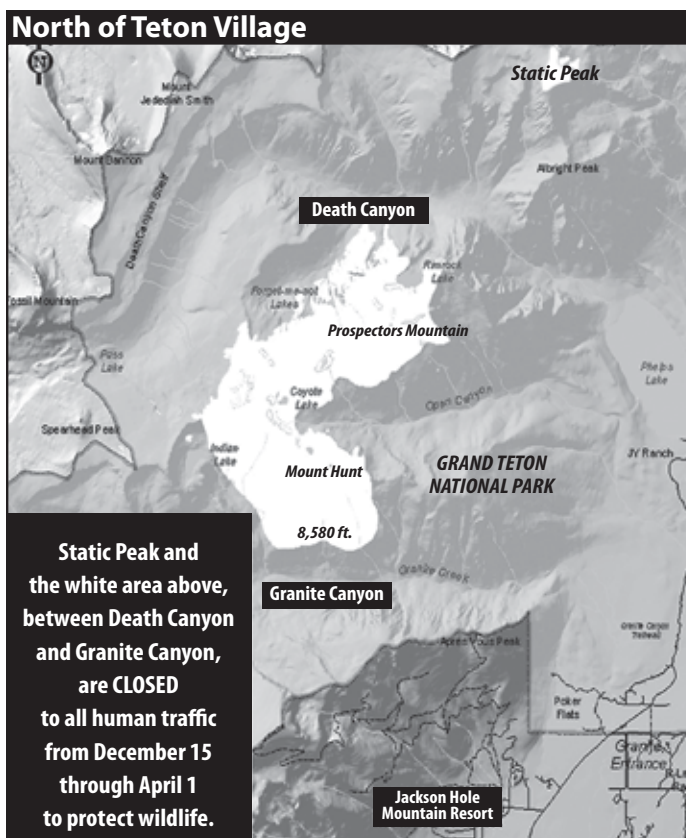
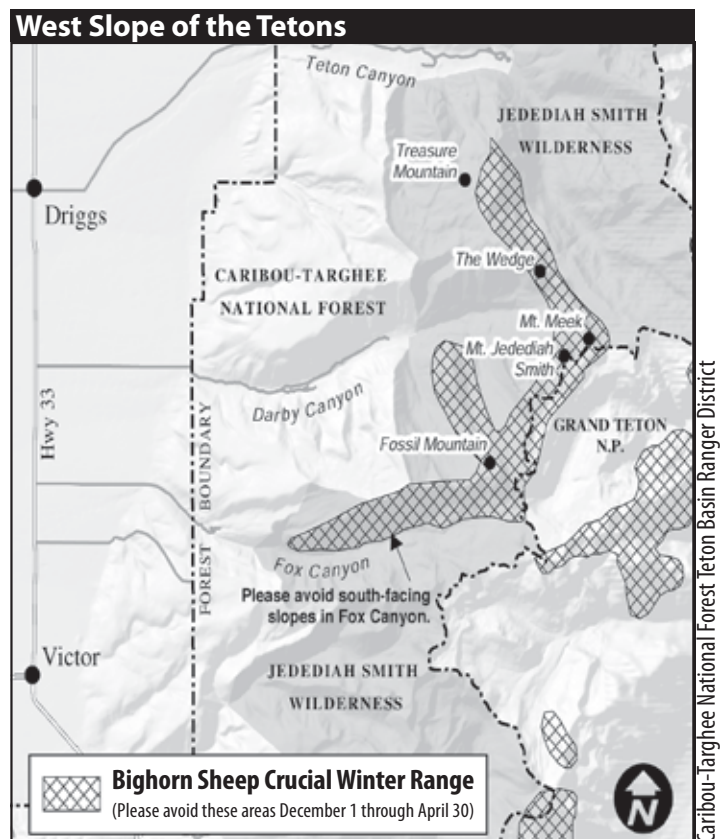
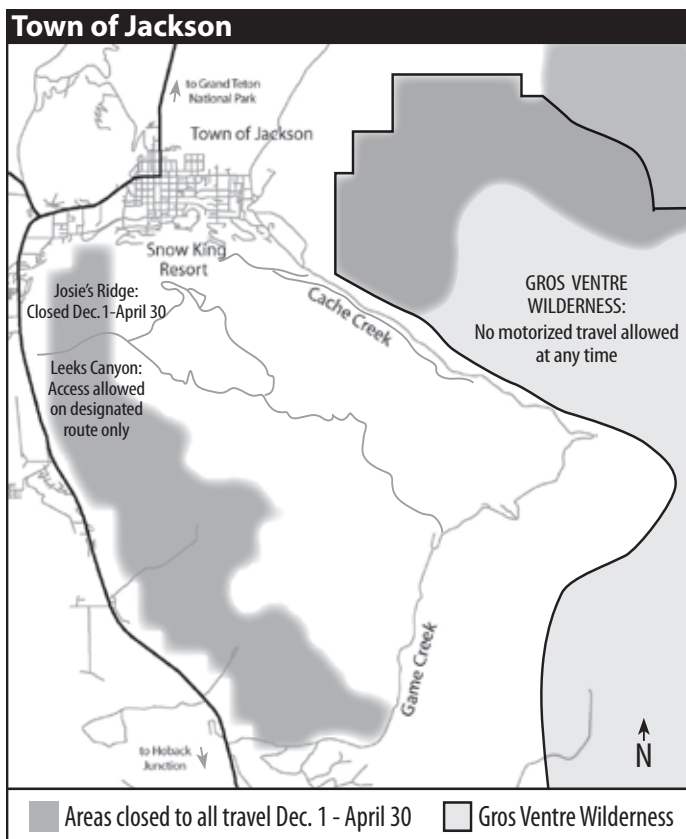


# Protect wildlife – don't poach the powder!

Please stay out of these places that are closed to protect wildlife:



Winter is the most stressful time of the year for wildlife. Deep snow, scarce food and cold temperatures make energy conservation key for winter survival.

When we disturb wildlife, we force them to spend energy avoiding us, which can result in their death.

We have many places to ski and snowmobile, but elk, deer, moose and bighorn sheep rely on undisturbed areas to survive the winter.

Please respect wildlife and their habitat.

**Stay out of areas that are closed to protect our wildlife.**

*Remember, "poaching" closed areas on foot or with dogs, skis, snowboards or snowmobiles can be as harmful to wildlife as poaching with a rifle.*

To report trespassers in closed areas, call the Teton Interagency Dispatch Center at (307) 739-3301.