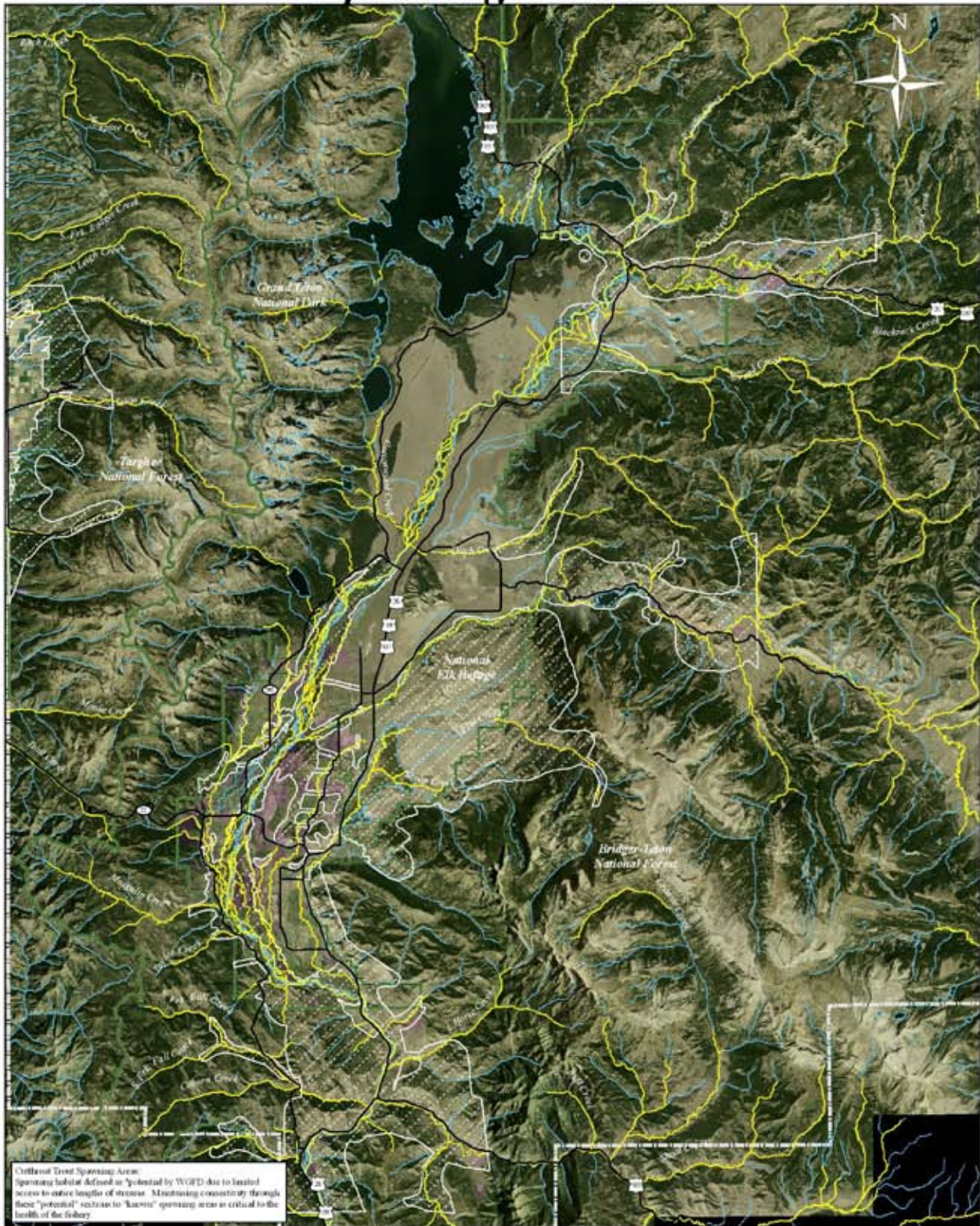
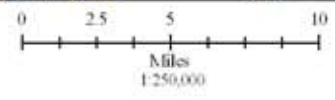


Potential Cutthroat Trout Spawning Habitat



- Potential Spawning Habitat (150 ft. buffer)
- National Hydrography Dataset Streams
- Major Roads
- Teton County
- NRO
- Conservation Easements
- Federal Lands



Cutthroat Trout Data: 2006 USGS/Yellowstone Cutthroat Trout Interagency Coordination Group and WGFD
 NRO, Conservation Easements, Roads and Administrative Boundaries: Teton County GIS Data Archive
 Aerial Photo: 2006 National Aerial Imagery Program (NAIP)
 Map assembled by Conservation Research Center for Jackson Hole Conservation Alliance: 2/21/08