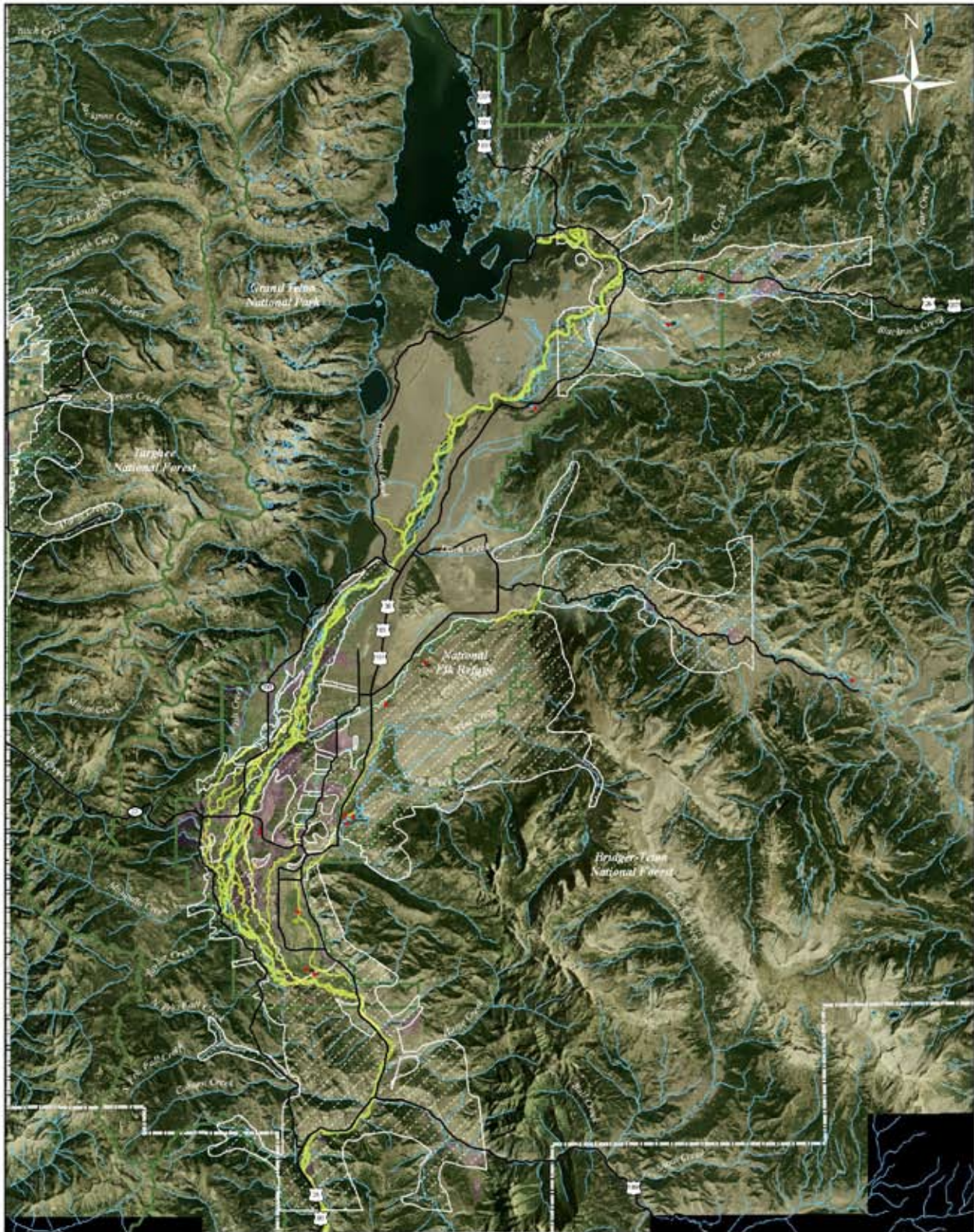
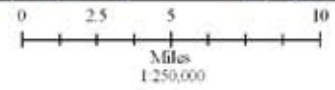


# Trumpeter Swan Habitat



- Historic Nesting Areas (300 ft. buffer)
- ~ Potential Winter Habitat (300 ft. buffer)
- ~ National Hydrography Dataset Streams
- Major Roads
- NRO
- Conservation Easements
- Federal Land
- Teton County



Trumpeter Swan Data: WGFD  
 NRO, Conservation Easements, Roads and Administrative Boundaries: Teton County GIS Data Archive  
 Aerial Photo: 2006 National Agriculture Inventory Program (NAIP)  
 Data assembled by Conservation Research Center for Jackson Hole Conservation Alliance: 2/21/08