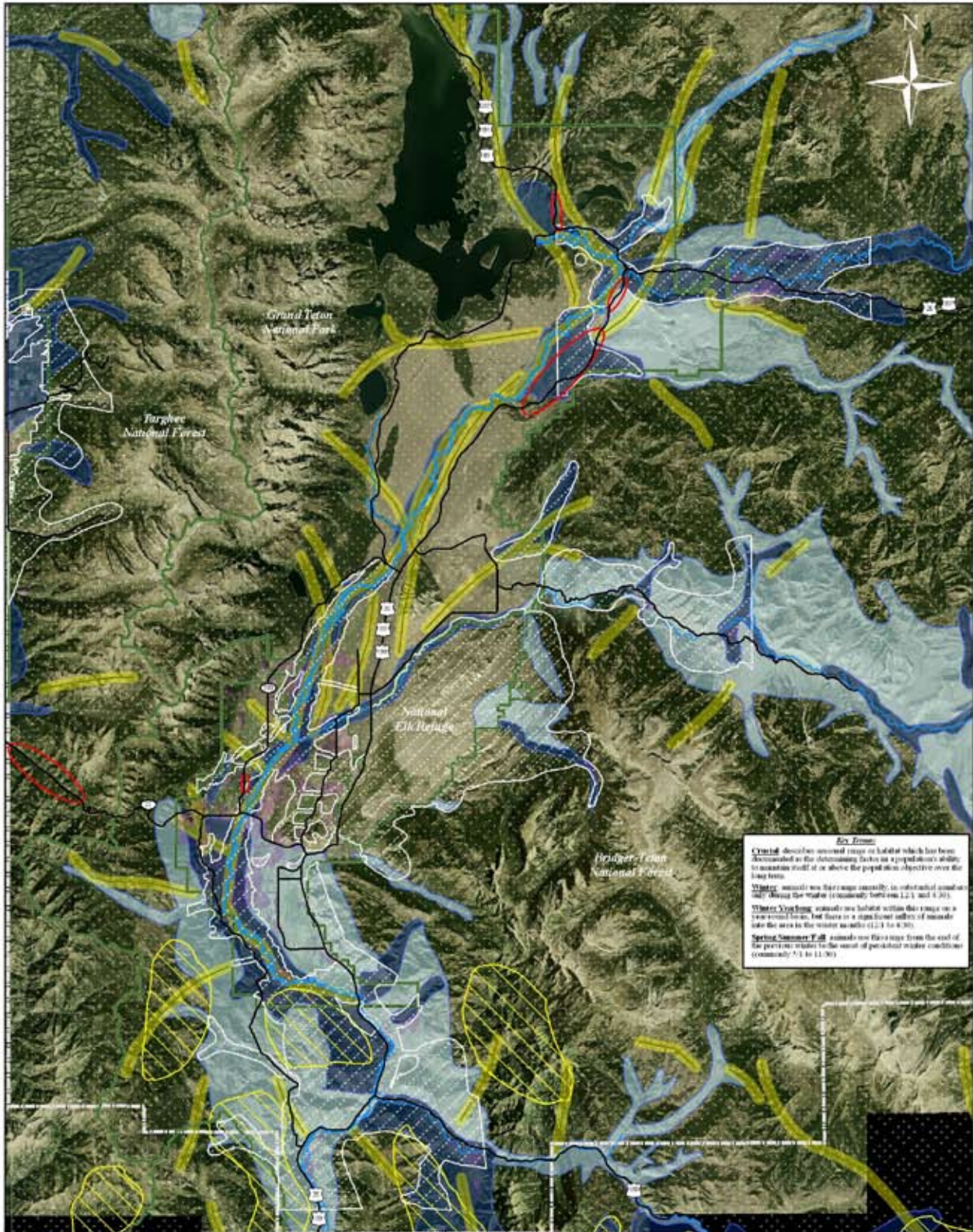
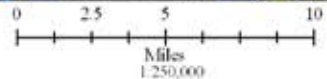


Moose Habitat



Key Terms:
Crucial describes essential range or habitat which has been demonstrated as the determining factor in a population's ability to maintain itself at or above the population objective over the long term.
Winter animals use this range seasonally, in substantial numbers and along the winter (commonly between 12/1 and 4/30).
Winter Yearlong animals use habitat within this range on a year-round basis, but there is a significant influx of animals into the area in the winter months (12/1 to 4/30).
Spring/Summer/Fall animals use this range from the end of the previous winter to the onset of persistent winter conditions (commonly 5/1 to 11/30).

- Crucial Winter
- Winter/Winter Yearlong Range
- Spring/Summer/Fall Range
- Parturition Areas
- Moose Vehicle Collision Hot Spot
- NRO
- Conservation Easements
- Federal Land
- Teton County
- Major Roads
- Migration Routes



WZRC's Vehicle Collision Hotspots: Jackson Hole Foundation and WZRC's Consulting Study, 2001. Data Research and Consulting, Inc. and Jackson Hole Wildlife Foundation
 Seasonal Range, Migration Routes and Parturition Areas: WZRC and the Wyoming Open Space Institute
 NRO, Conservation Easements, Roads and Administrative Boundaries: Teton County GIS Data Archive
 Aerial Photo: 2001 National Agricultural Imagery Program (NAIP)
 Map assembled by Conservation Research Center for Jackson Hole Conservation Alliance 2/21/08