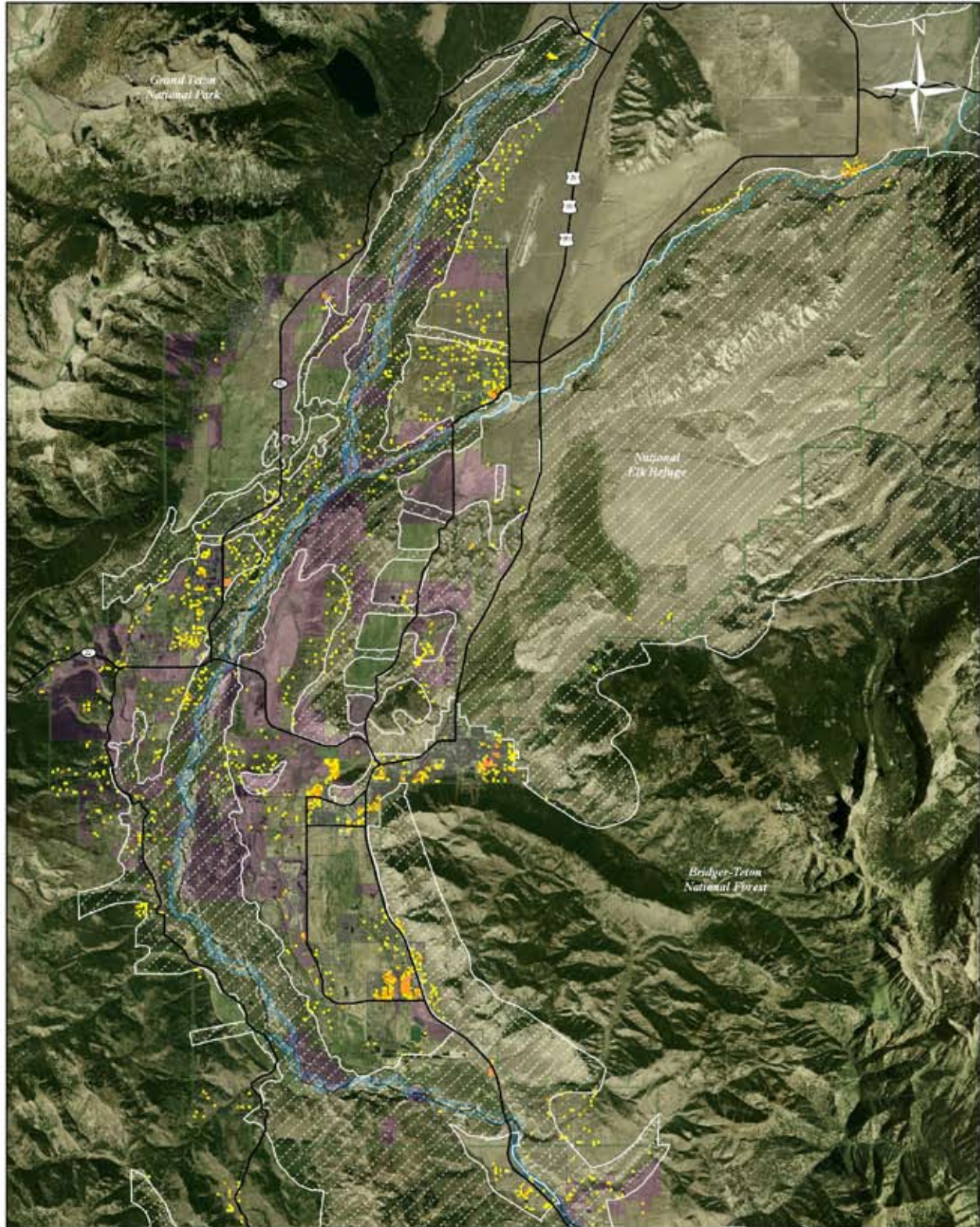
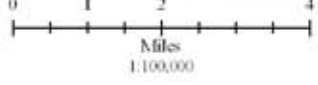


# Building Density Added 1994-2006



- |  |  |
|--|--|
|  1 building/acre        |  NRO                    |
|  2-3 buildings per acre |  Conservation Easements |
|  4-8 buildings per acre |  Federal Land           |
|  9-12 buildings/acre    |  Private Land           |

Major Roads   
0 1 2 4  
Miles  
1:100,000

Building Density: Digitized from 1994 and 2006 aerial photos (NRO and 3000 foot buffer)  
NRO, Conservation Easements, Parcels, Roads and Administrative Boundaries: Teton County GIS Data Archive  
Aerial Photo: 2006 National Agricultural Imagery Program (NAIP)  
Map assembled by Conservation Research Center for Jackson Hole Conservation Alliance. 2/13/08