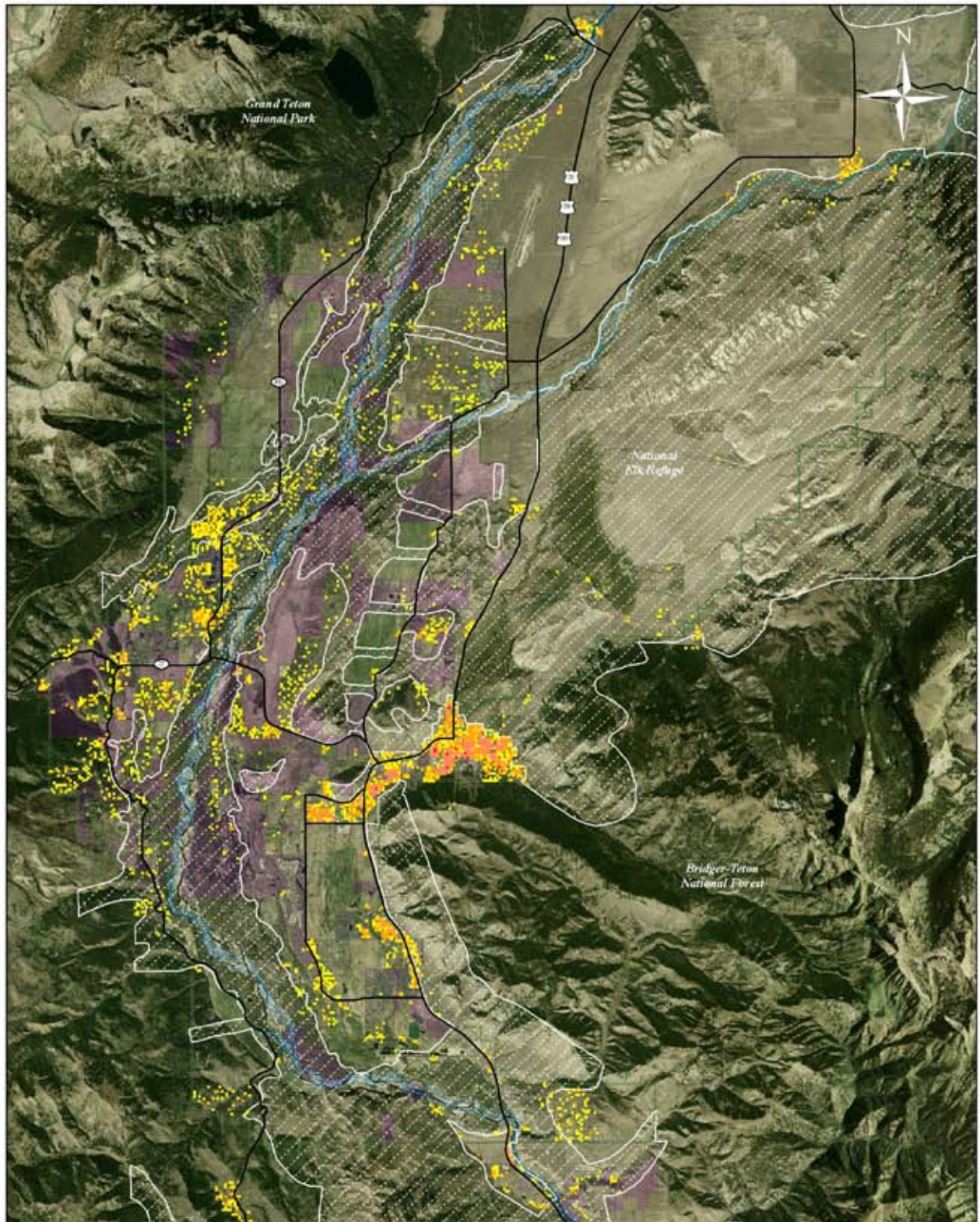
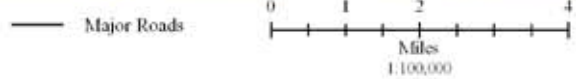


# Building Density 1994



- |  |  |
|--|--|
|  1 building/acre        |  NRO                    |
|  2-3 buildings per acre |  Conservation Easements |
|  4-8 buildings per acre |  Federal Land           |
|  9-23 buildings/acre    |  Private Land           |



Building Density: Digitized from 2006 aerial photos (NRO and 3000 foot buffer)  
 NRO, Conservation Easements, Parcels, Roads and Administrative Boundaries: Teton County GIS Data Archive  
 Aerial Photo: 2006 National Agricultural Imagery Program (NAIP)  
 Map assembled by Conservation Research Center for Jackson Hole Conservation Alliance 2-21-05