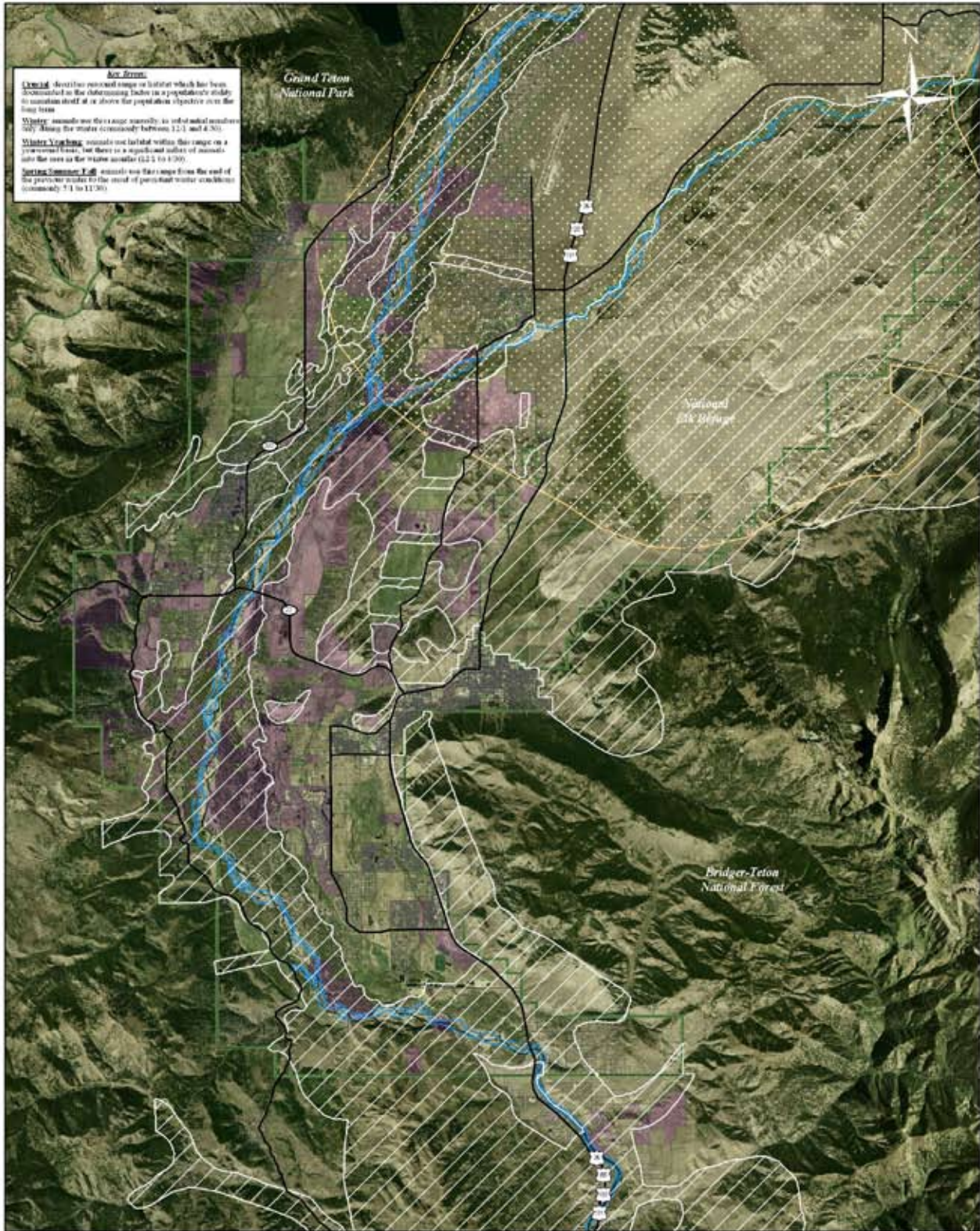
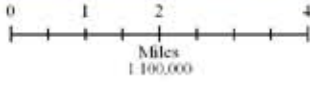


Pronghorn Antelope Habitat



Hot Spots:
 Critical: describes seasonal range or habitat which has been documented to be deteriorating faster in a population's study or uncertain if it is above the population objective over the long term.
 Winter: animals use this range seasonally in total animal numbers 50% (Along the states seasonally between 12-1 and 4-30).
 Winter Yearling: animals not listed within this range on a permanent basis, but there is a significant number of animals over the area in the winter months (12-1 to 4-30).
 Spring Summer Fall: animals use this range from the end of the previous winter to the onset of permanent winter conditions (commonly 5-1 to 11-30).

- NRO
- Conservation Easements
- Spring Summer Fall Range
- Federal Land
- Private Lands
- Major Roads



Seasonal Range: Conservation Research Center per personal communication with Steve Cain, Grand Teton National Park.
 NRO, Conservation Easements, Parcels, Roads and Administrative Boundaries: Teton County GIS Data Archive.
 Aerial Photo: 2006 National Agricultural Imagery Program (NAIP).
 Map assembled by Conservation Research Center for Jackson Hole Conservation Alliance, 2/21/08.