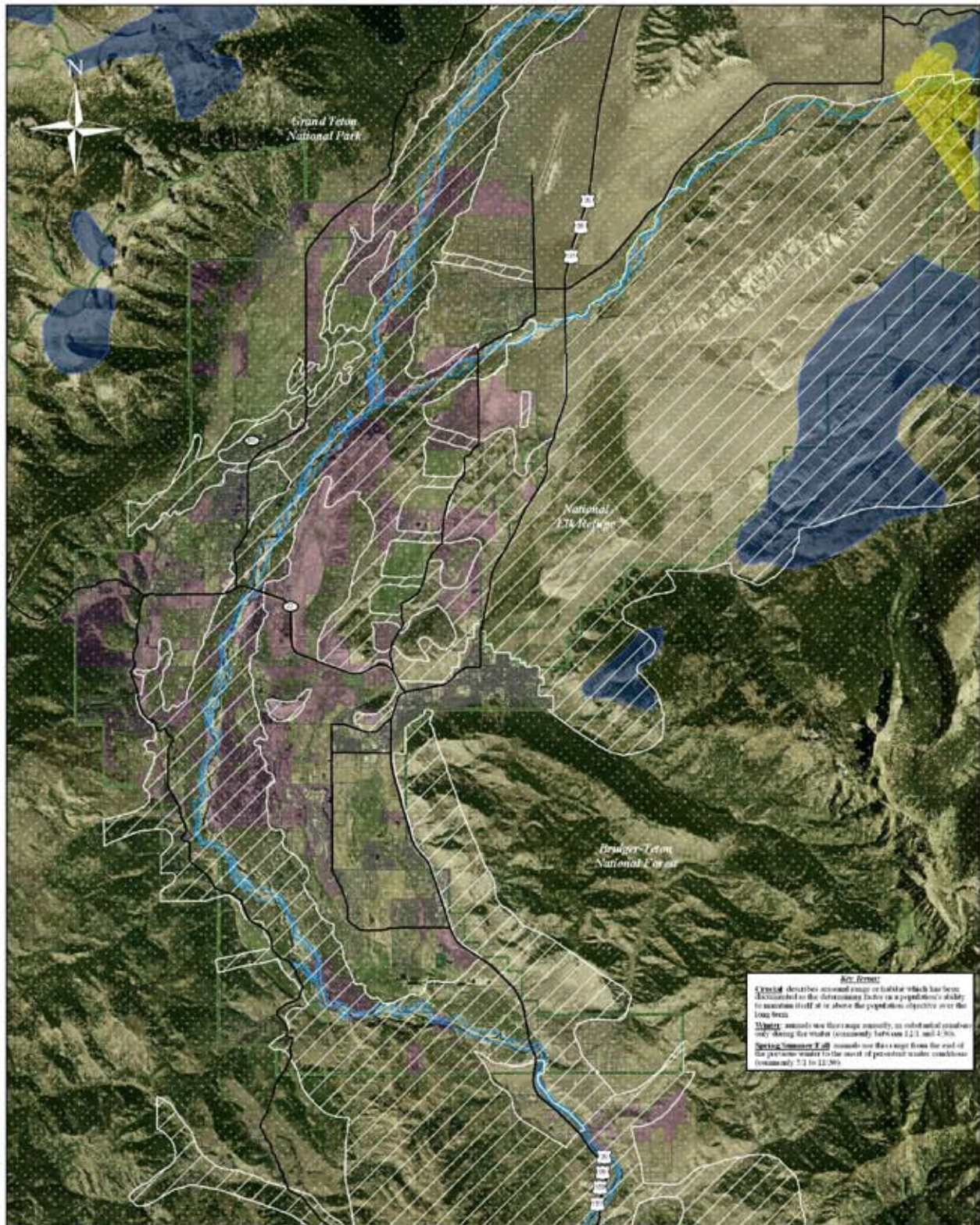
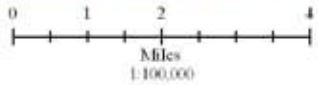


Bighorn Sheep Habitat



Act. form:
Crucial describes seasonal range or habitat which has been
 determined to be the primary factor in a population's ability
 to sustain itself at or above the population objective over the
 long term.
Winter animals use this range seasonally in substantial quantities
 only during the winter (commonly late Nov. to 12.1 and 4.30).
Spring/Summer/Fall animals use this range from the end of
 the previous winter to the onset of persistent winter conditions
 (commonly 7.1 to 12.30).

- Crucial Winter/ Crucial Winter Yearlong Range
- Spring/Summer/Fall Range
- NRO
- Migration Routes (0.5 mi. buffer)
- Conservation Easements
- Federal Lands
- Private Lands
- Major Roads



Seasonal Range and Migration Routes: WGFCD and the Wyoming Open Spaces Initiative
 NRO, Conservation Easements, Parcels, Roads and Administrative Boundaries: Teton County GIS Data Archive
 Aerial Photo: 2006 National Agricultural Inventory Program (NAIP)