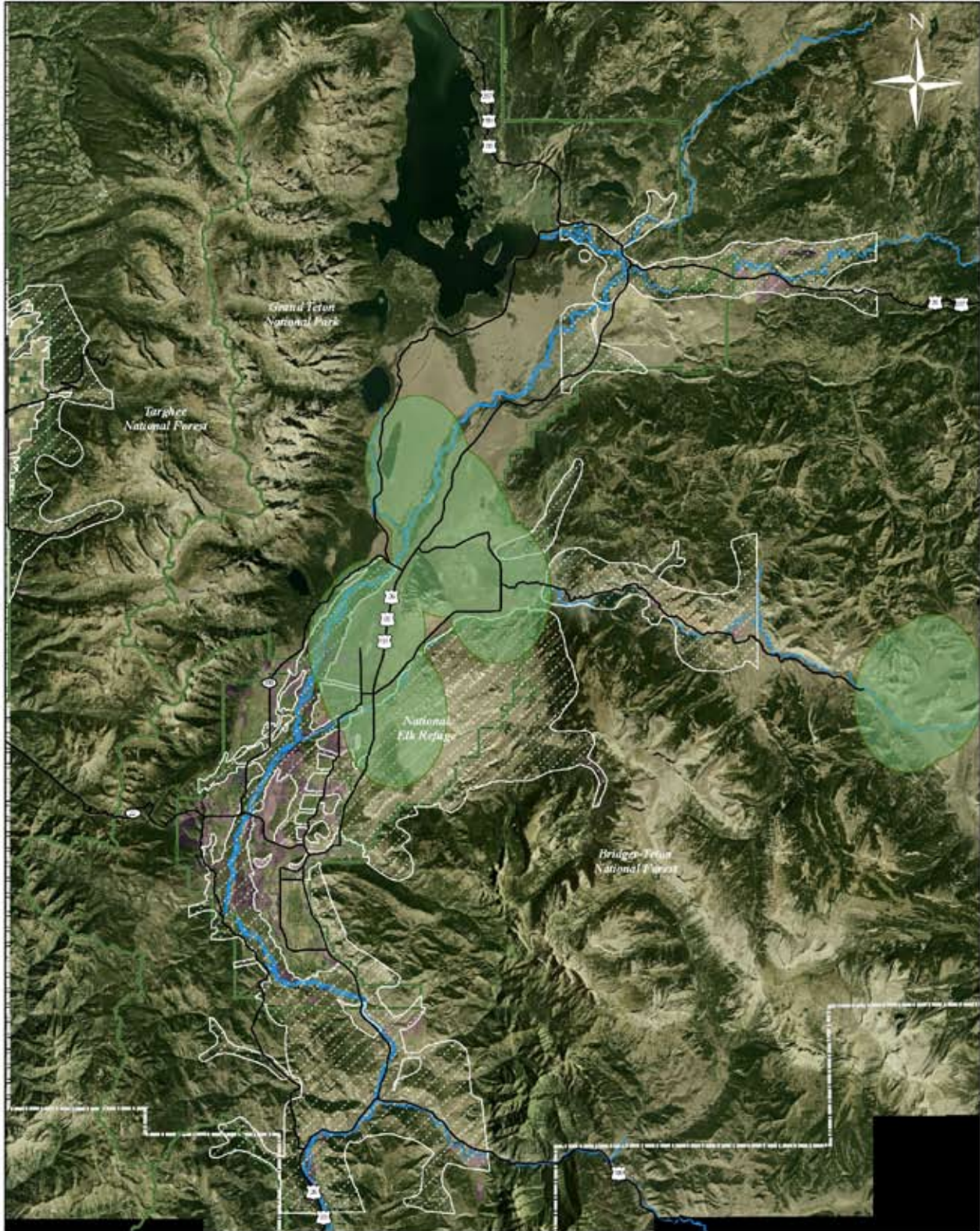
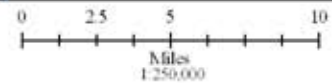




Sage Grouse Lekking Habitat



- Lekking Habitat (5 km Buffer)
- NRO
- Conservation Easements
- Federal Lands
- Teton County
- Major Roads



Sage Grouse Data: WOPD
 NRO, Conservation Easements, Roads and Administrative Boundaries: Teton County GIS Data Archive
 Aerial Photo: 2006 National Agricultural Imagery Program (NAIP)