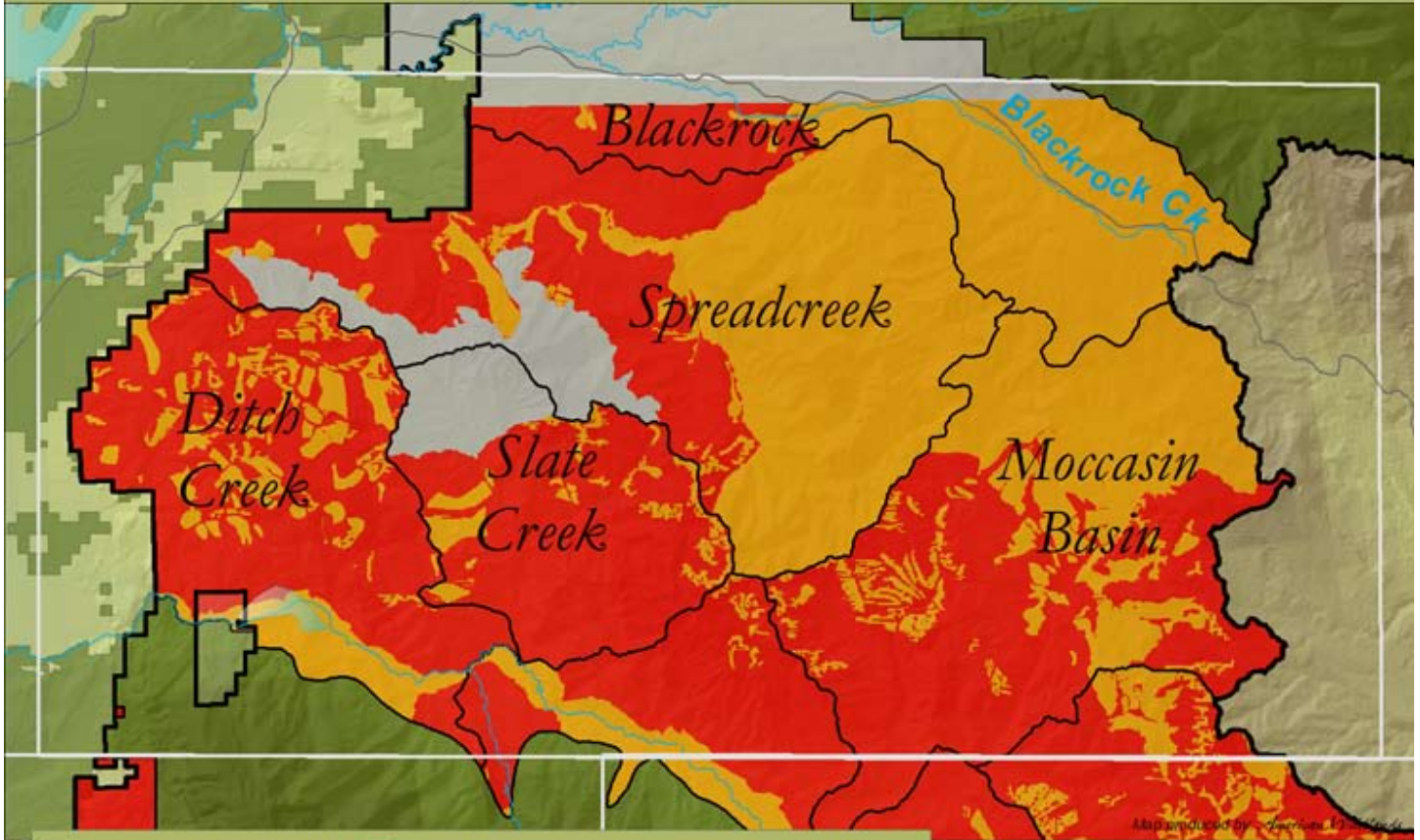


*Oil & Gas Leasing Potential & Northern Priority Focus Area*  
 The Bridger-Teton National Forest in Jackson Hole Area



Map produced by [unreadable] 12

- |                              |  |
|------------------------------|--|
| Wilderness, Parks & Refuge   | Open for New Leasing: Standard / Ltd. Stipulations |
| BTNF Management Areas        | Open for New Leasing: No Surface Occupancy         |
| Priority Focus Areas         | Not Suitable for New Leasing                       |
| Eligible Wild & Scenic River |  |

